

**LOCATION**  
 Lat: 35.5979 °N  
 Long: -80.8304 °W  
 HUC: 03050101  
**UPPER CATAWBA**

**USGS QUAD**  
 Mooresville, NC

**SCALE**  
 1:24,000  
**ACRES**  
 122.75

<b>FIGURE NO.</b>	<p><b>WEPG</b>          Wetlands and Environmental Planning Group          Leonard S. Rindner, PLLC.          len.rindner@wetlands-epg.com          (704) 904-2277          www.wetlands-epg.com</p>	<b>RINEHARDT ROAD - MOORESVILLE</b> Iredell Co., NC	Drawn By: NRN	Reviewed By: LSR
		USGS MAP – WATERS OF THE U.S. EXISTING CONDITIONS STUDY SUBJECT TO USACE VERIFICATION	<b>DATE:</b> 3/29/17	



APPROXIMATE  
PROJECT BOUNDARY  
STUDY LIMITS

FIGURE NO.

**WEPG**

Wetlands and Environmental Planning Group  
Leonard S. Rindner, PLLC.

len.rindner@wetlands-epg.com  
(704) 904-2277  
www.wetlands-epg.com

**RINEHARDT ROAD - MOORESVILLE**  
Iredell Co., NC

**NRCS PUBLISHED SOILS MAP**  
-WATERS OF THE U.S.-  
EXISTING CONDITIONS STUDY  
SUBJECT TO NCDEQ VERIFICATION

Drawn By:  
NRN

Reviewed By:  
LSR

DATE:  
3/26/18

Map Unit Symbol	Map Unit Name	Acres in AOI	Percent of AOI
CfB	Cecil-Bethlehem-Spartanburg complex, 2 to 8 percent slopes	0.0	0.0%
CgC	Cecil-Urban land complex, 2 to 10 percent slopes	9.8	6.2%
ChA	Chewacla loam, 0 to 2 percent slopes, frequently flooded	27.7	17.5%
LcB2	Lloyd clay loam, 2 to 6 percent slopes, moderately eroded	12.8	8.1%
LcC2	Lloyd clay loam, 6 to 10 percent slopes, moderately eroded	43.5	27.5%
LcD2	Lloyd clay loam, 10 to 15 percent slopes, moderately eroded	12.7	8.0%
LcE2	Lloyd clay loam, 15 to 25 percent slopes, moderately eroded	12.0	7.6%
MaD4	Madison-Udorthents complex, 2 to 15 percent slopes, gullied	16.4	10.3%
MaE4	Madison-Udorthents complex, 15 to 25 percent slopes, gullied	4.4	2.7%
MaF4	Madison-Udorthents complex, 25 to 45 percent slopes, gullied	0.7	0.5%
PgE	Pacolet-Bethlehem-Spartanburg complex, 15 to 25 percent slopes, stony	3.0	1.9%
RiF	Rion sandy loam, 15 to 45 percent slopes	1.8	1.1%
ScD	Spartanburg-Cecil-Bethlehem complex, 8 to 15 percent slopes, stony	7.9	5.0%
UmF	Udorthents-Urban land complex, 0 to 45 percent slopes	4.5	2.8%
Ur	Urban land	0.0	0.0%
W	Water	1.2	0.8%
<b>Totals for Area of Interest</b>		<b>158.4</b>	<b>100.0%</b>

FIGURE NO.

**WEPG**

Wetlands and Environmental Planning Group  
Leonard S. Rindner, PLLC.

len.rindner@wetlands-epg.com  
(704) 904-2277  
www.wetlands-epg.com

**RINEHARDT ROAD - MOORESVILLE**

Iredell Co., NC

**NRCS PUBLISHED SOILS MAP**

-WATERS OF THE U.S.-  
EXISTING CONDITIONS STUDY  
SUBJECT TO NCDEQ VERIFICATION

Drawn By:

NRN

Reviewed By:

LSR

**DATE:**

3/26/18





FIGURE NO.

**WEPG**

Wetlands and Environmental Planning Group  
Leonard S. Rindner, PLLC.

len.rindner@wetlands-epg.com  
(704) 904-2277  
www.wetlands-epg.com

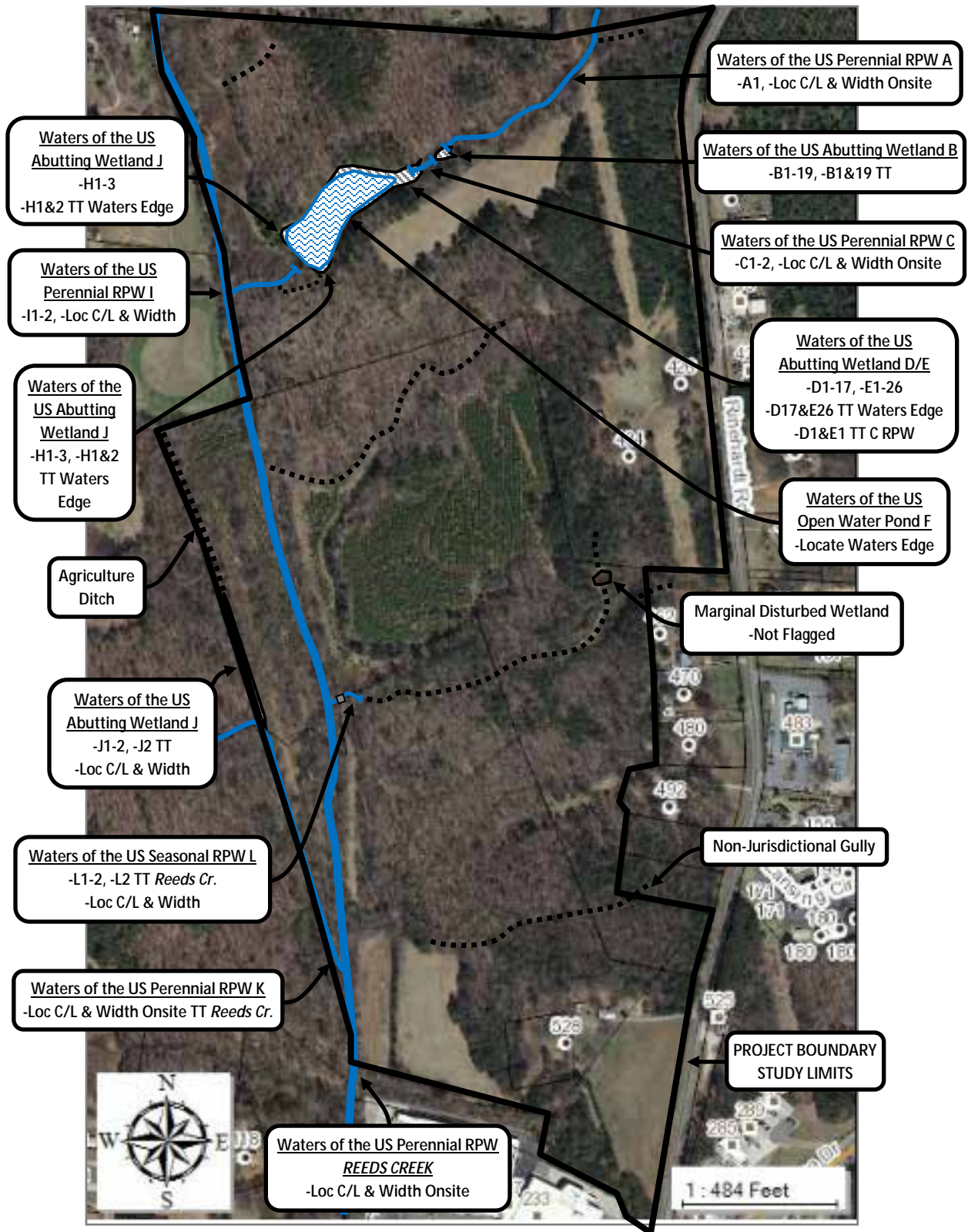
**RINEHARDT ROAD – ADDITIONAL PARCEL**  
Iredell Co., NC

**PRELIMINARY MAP – WATERS OF THE U.S.**  
EXISTING CONDITIONS STUDY  
SUBJECT TO USACE VERIFICATION

Drawn By:  
NRN

Reviewed By:  
LSR

**DATE:**  
3/26/18



<p>FIGURE NO.</p>	<p><b>WEPG</b> Wetlands and Environmental Planning Group Leonard S. Rindner, PLLC.  len.rindner@wetlands-epg.com (704) 904-2277 www.wetlands-epg.com</p>	<p><b>RINEHARDT ROAD - MOORESVILLE</b> Iredell Co., NC</p>	<p>Drawn By: NRN</p>	<p>Reviewed By: LSR</p>
<p>DELINEATION MAP – WATERS OF THE U.S. EXISTING CONDITIONS STUDY SUBJECT TO USACE VERIFICATION</p>		<p>DATE: 5/3/17</p>		